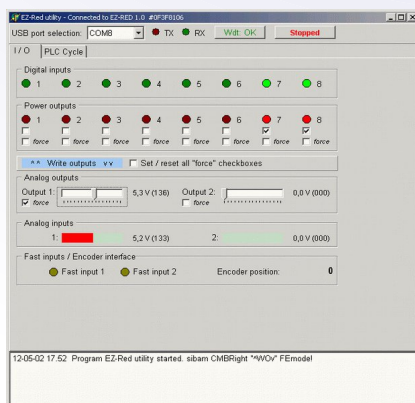


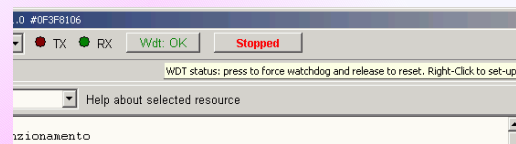
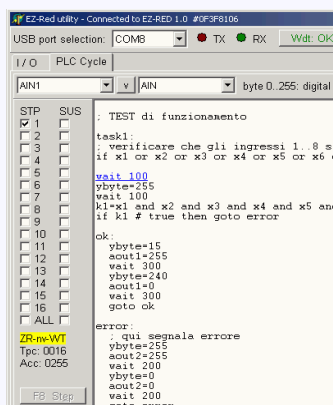
Programmable I/O power module for PC / stand-alone



- ▶ To control machinery and other devices using a personal computer (on-line mode)
- ▶ Internal PLC, to work in stand-alone mode without computer
- ▶ Power supply from 12 to 30 volt DC
- ▶ Monitor LEDs on all inputs and outputs
- ▶ Extractable connectors for connections
- ▶ Compact size: mm 95x110x24



- ▶ 8 digital inputs 5 to 30 volts
- ▶ 8 power outputs (for inductive loads too) with current up to 2A (max 4A total)
- ▶ 2 fast, opto-coupled 10Khz inputs (encoder interface)
- ▶ 2 analog inputs 0-10V
- ▶ 2 analog outputs 0-10V
- ▶ 1 power supply output, stabilized 12V 200mA
- ▶ USB interface, Windows® IDE utility/compiler
- ▶ Compatible with LabView®
- ▶ Simple and effective text-mode command console
- ▶ Internal configurable *watch-dog*



- ▶ Procedural programming language with PLC extensions
- ▶ 16 concurrent tasks
- ▶ Integrated development IDE
- ▶ 64 virtual relays, 64 16-bit data registers
- ▶ 16 timers with resolutions from milliseconds to minutes
- ▶ Special configuration non-volatile registers
- ▶ Special instructions for data acquisition
- ▶ Password protection for flash memory (PLC program)

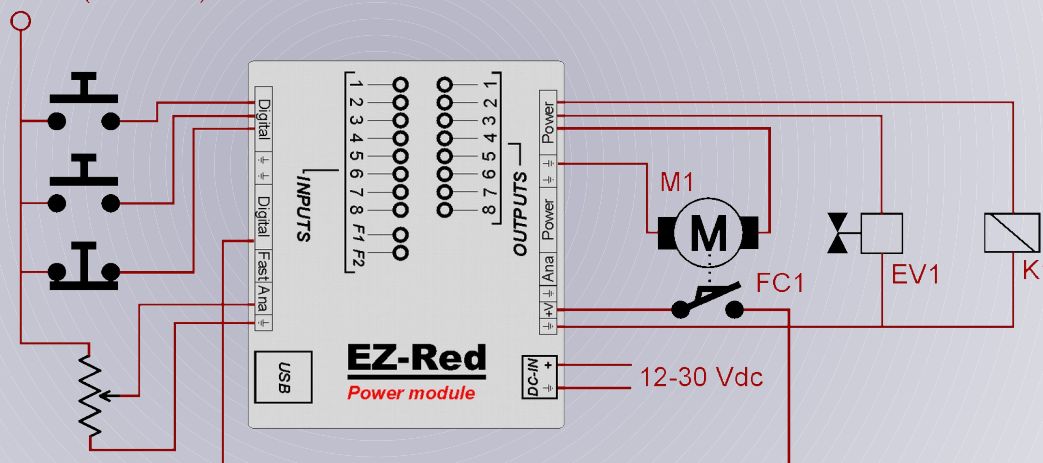
Programmable I/O power module for PC / stand-alone



Applications:

- ▶ Stand-alone machinery controls
- ▶ Power interface for computers
- ▶ Upgrade of old automation systems
- ▶ Data acquisition
- ▶ Test and quality control systems
- ▶ Simple and cost effective alternative to PLC

+10 Vdc (5-30 Volt)



EZ-Red
Power module

- ▶ The power output support directly resistive and inductive loads such as relays, electro valves, small CC motors.
- ▶ The power outputs are protected and monitored for short-circuit, over-temperature, over-voltages and open circuit (broken circuits).
- ▶ The digital inputs accept voltages from 5 to 30 volts DC, and are protected from polarity inversion.
- ▶ EZ-Red monitors continuously its power supplies and PC communication.